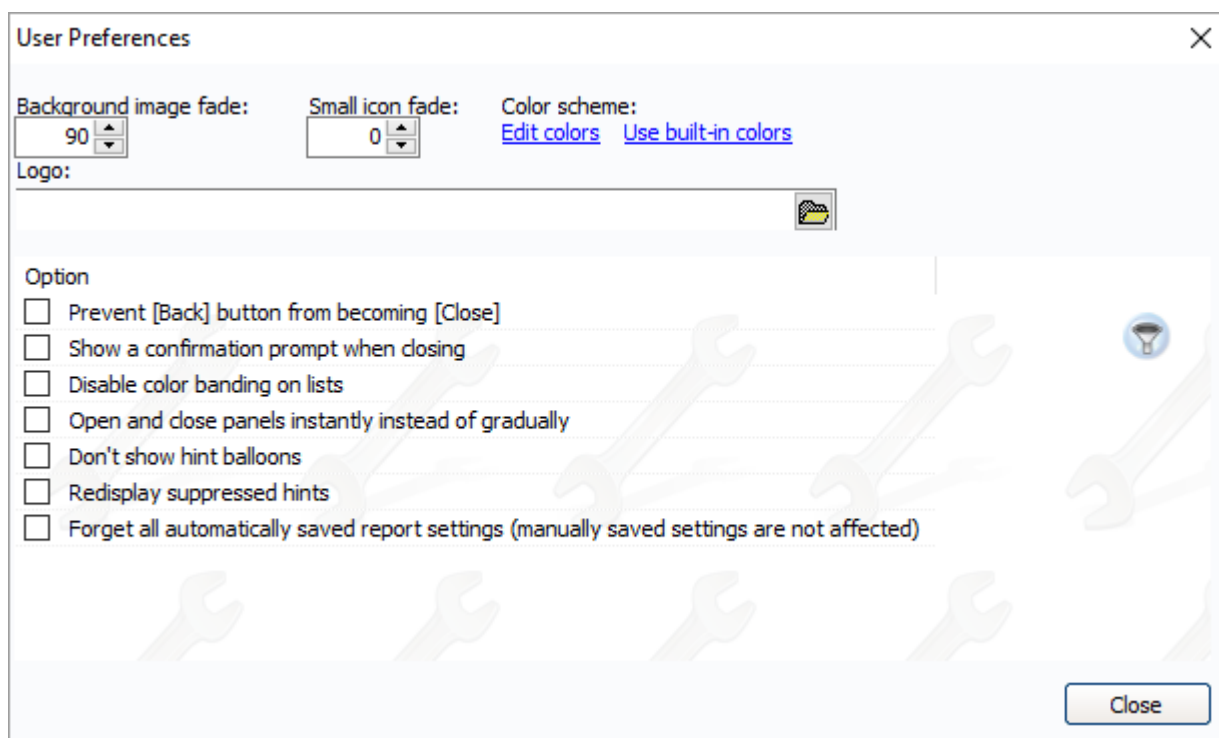




# User Preferences

This is a collection of settings which affect how you use GMS 7. **User Preferences** is accessible from the panel in the **Special tools** section of the left-hand side of the GMS 7 home screen.



**Background image fade** allows you to adjust the transparency of the background images in GMS. 0 indicates complete visibility, while 100 is invisible.

**Small icon fade** allows you to adjust the transparency of the small icons in GMS (0-100).

**Color scheme** allows you to configure the panel colors or choose to use the built-in colors.

**Logo** allows you to upload a logo or image to be displayed in the lower left corner of your GMS screen.

## Options

This section allows you to configure several settings to streamline GMS 7 usability.